

APS-AER (Model A) Fundus Camera

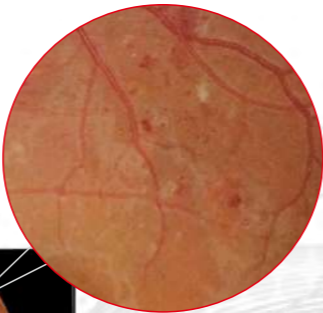
- ⊙Adopts the fifth generation leading optical system in China
- ⊙Professional High Definition SLR digital camera, upto 24.1 Mega pixels
- ⊙Auto focus system, auto flash system, auto image optimization
- ⊙Multipoint Internal fixation, double dots alignment
- ⊙The image is more clear and solid, and the details are perfect.
- ⊙More precise and comfortable mechanical movement system
- ⊙Automatic jigsaw: seamless splicing pictures, presenting the whole retinal image
- ⊙Red free light: the retinal nerve fiber layer is observed, and the sensitivity is higher (optional)
- ✕Fundus color image.



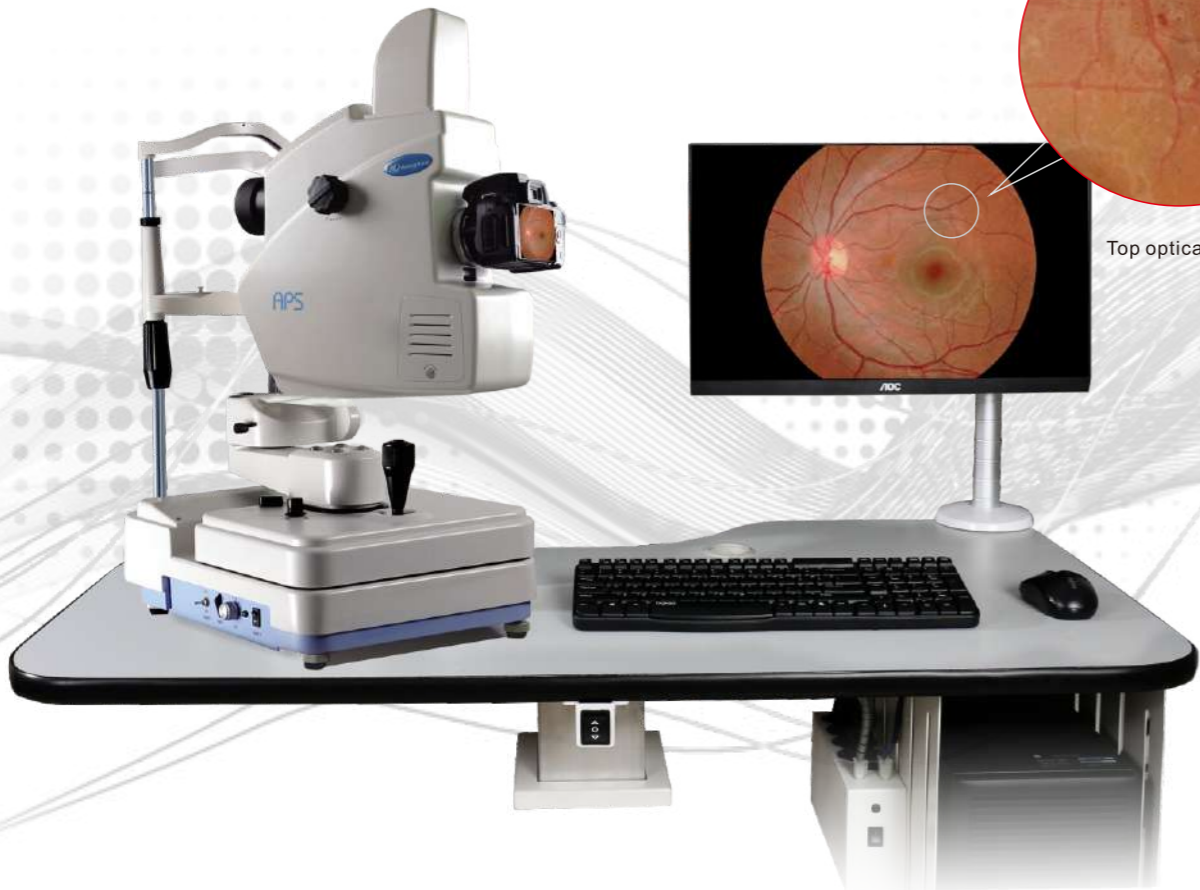
The 7 inch LCD monitor provides one more option for observing.



Nikon D 5200 with 24.1 mega pixel



Top optical Performance



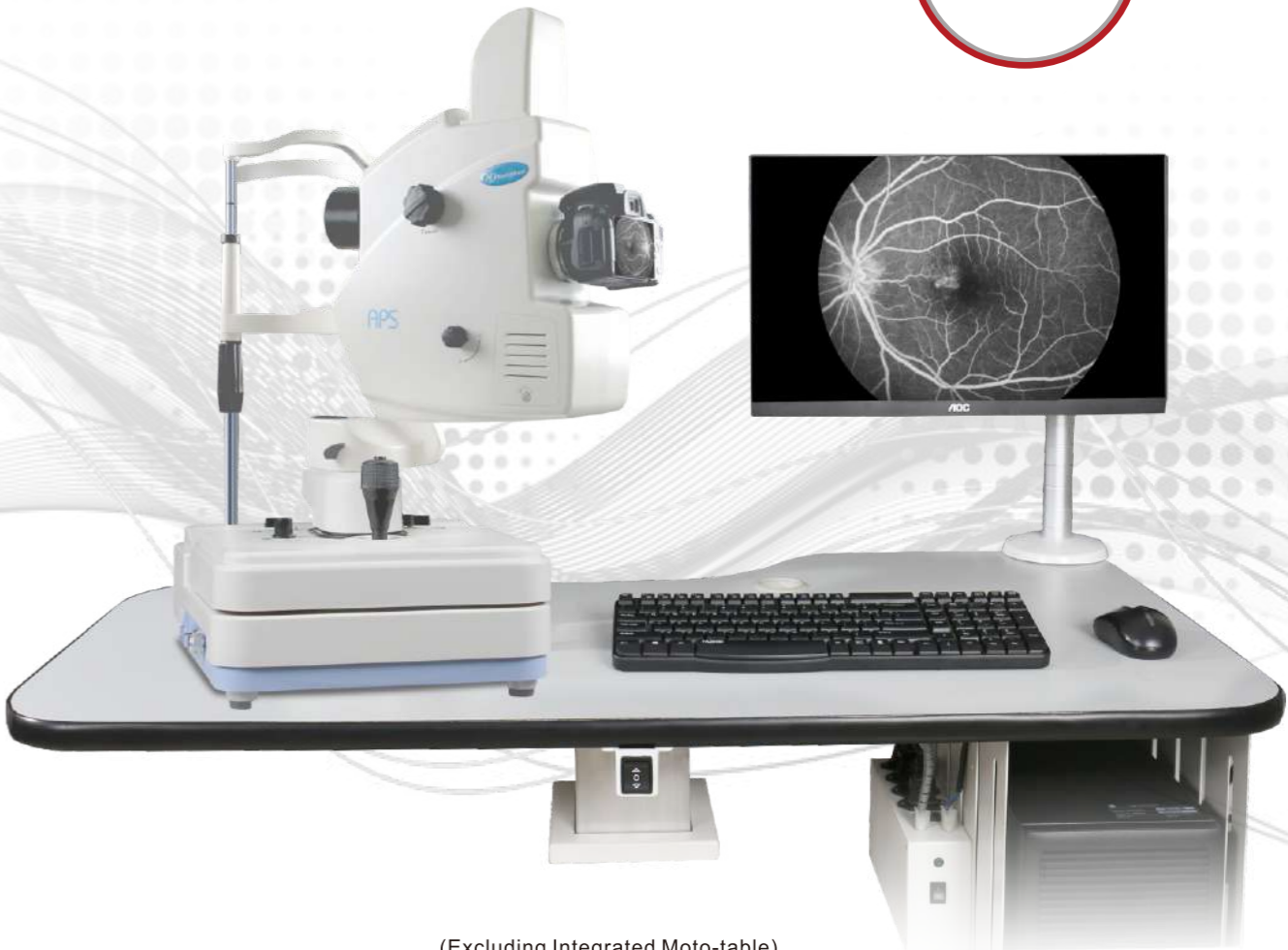
(Excluding Integrated Moto-table)

- Automatic Focus
- Double dots Alignment
- Automatic exposure
- Nine fixation

APS-BER Fundus Camera & Fluorescein Angiography System

- ⊙Adopts the fifth generation leading optical system in China
- ⊙Professional high definition SLR digital camera, up to 24.1 mega pixels
- ⊙Manual focus, manual flash, auto image optimization
- ⊙Multipoint Internal fixation, double dots alignment
- ⊙Automatic jigsaw, seamless splicing pictures, presenting the whole retinal image
- ⊙Fundus color image, fluorescence fundus fluorography.
- The smallest pupil is 3.3mm, and the audience is larger, which is suitable for the ophthalmological examination, physical examination and diabetic fundus screening.
- The fundus color images, the dynamic images and static flash of fluorescein angiography of the retina were treated in a digital manner.
- The image can be processed, arbitrarily zooming, moving, pasting, splicing, measuring and calculating the area of the lesion, the editing of the text and the digitization of the generated medical records.

Intelligent and efficient,  
Easy Operation  
Excellent image quality



(Excluding Integrated Moto-table)

- Automatic Focus
- Double dots Alignment
- Automatic exposure
- Five fixation

Technical Specification

Model	APS-AER (Model A)	APS-BER
Camera brand and model	D5300	D5300
Camera resolution	24.1 Mega Pixel	24.1 Mega Pixel
Function:	Color fundus	Color fundus and fundus fluorescein angiography
Lens type	Aspherical	Aspherical
Field of view	Up to 53 °	Up to 53 °
Non-mydriatric	Yes	Yes
Minimum pupil size	3.3mm	3.3mm
FFA		Flash & Video record
Light source	Infrared LED	Infrared LED
Diopter compensation	≥ ± 15D	≥ ± 15D
Fixation lamp	External fixation lamp+ five internal fixation lamp Nine internal fixation lamp( optional)	External fixation lamp+ five internal fixation lamp Nine internal fixation lamp( optional)
Alignment	Two dots	Two dots
Focus mode	Auto Focus & Manual Focus	Auto Focus & Manual Focus
Exposure mode	Auto flash & Manual Flash	Auto flash & Manual Flash
Dicom3.0	Optional	Optional
Eye position identification	Auto	Auto
Optic angle	Horizontal ± 30, Vertical ± 12.5	Horizontal ± 30, Vertical ± 12.5
Working distance	42mm ± 2mm	42mm ± 2mm
Mosaic	Auto	
Red-free	Yes	NO

