

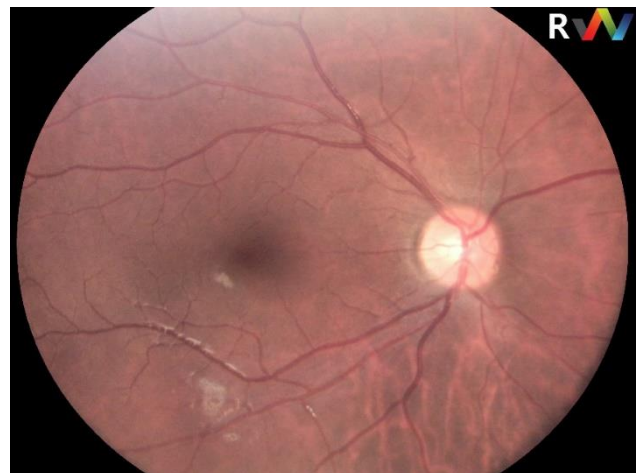
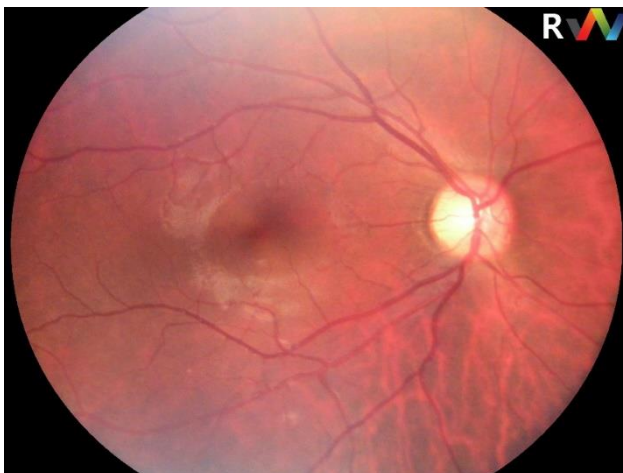
### • Introduction

**Portable Fundus Camera nun +** is a medical device which can find the retinal disease by observing the retina of the human or animal. User can focus on the retinal surface by manual focusing knob viewing with IR light source, and get the visible image with white LED flash. So there is no need to use any pupil dilation agent.

Using the user's Android OS smartphone, the user can get the view of the retinal image and control the level of lighting, etc.

### • Features

- Hand-held Fundus camera
- Non mydriatic
- FOV : > 45° (horizontal), ~40°(Vertical)
- Diopter range : From -20D to +20D
- Light source : IR LED and White LED
- Android OS smartphone
- High resolution CMOS : max. 13M pixels  
(image resolution : 2880 x 2160 pixels)
- Rechargeable battery : 3.6V 3500mAh





### • Smartphone Application

Smartphone application for android is available so that it can conveniently manage the patient's retinal image.

