

SLM-6L/6M/6H Portable Slit Lamp

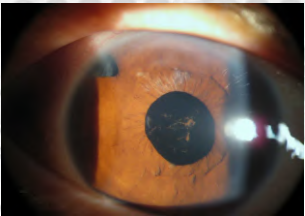


With all the functions of a desktop slit lamp, has patented technology;
Easy to operate, convenient to carry, especially for migrant clinic,
ward rounds to check;
Unique dual objective lens(1.0X, 1.6X) zoom, with high practicality;
3 magnifications 10X, 16X, 25.6X;

- With all the functions of a desktop slit lamp, especially for migrant clinic, ward rounds to check.
- Long standby use, up more than 5 hours(continue use).
- Bright white LED light bulbs, brightness≥30000lux, life of more than 50,000hours.
- Four kinds of spot size, the minimum Φ0.2mm, maximumΦ12mm.
- Variety of filters, cobalt blue, red free, Grey filter.
- Lightweight and compact, weighing only 700g(including battery)

Optional phone camera system

Support Iphone, Samsung and other major brand mobile phones
Equipped with a dedicated camera interface, simple shooting



Technical Specification				
Model		SLM-6L	SLM-6M	SLM-6H
Microscope	Microscope Type	Converging		
	Objective Lens	1.0x	1.0x 1.6x	1.0x 1.6x
	Eyepiece	10x	10x	10x 16x
	Total Magnifications	10x	10x 16x	10x 16x 25.6x
	Working Distance	81mm		
	Intraocular Distance	45mm-78mm		
	Diopter Adjustment	-8D ~ +8D		
Illumination	Slit Width	0-12mm Continuous		
	Slit Height	12mm	1-12mm	1-12mm
	Slit Angle	Horizontal +30°		
	Light Spot Diameter	φ 12mm	φ 0.2mm; φ1mm; φ5mm; φ12mm	
	Filters	Heat Absorption; Yellow; Redfree (Green); Cobalt Blue		
	Illumination Bulb	High- Brightness White LED		
	Brightness	>30000Lux		
	Power	5VA		
Power	Charging Voltage	AC 100 ~240V, 50/60Hz		
	LED Working Voltage	DC 3V, 350mAh		
	Battery	Li-ion Battery; 7.4V, 680mAh. Full Battery can supply 5-6 hours continuously		
Weight and Dimension	Dimension	169.5 x 109.5 x 228.5mm		
	Weight	700g (Including Battery)		